

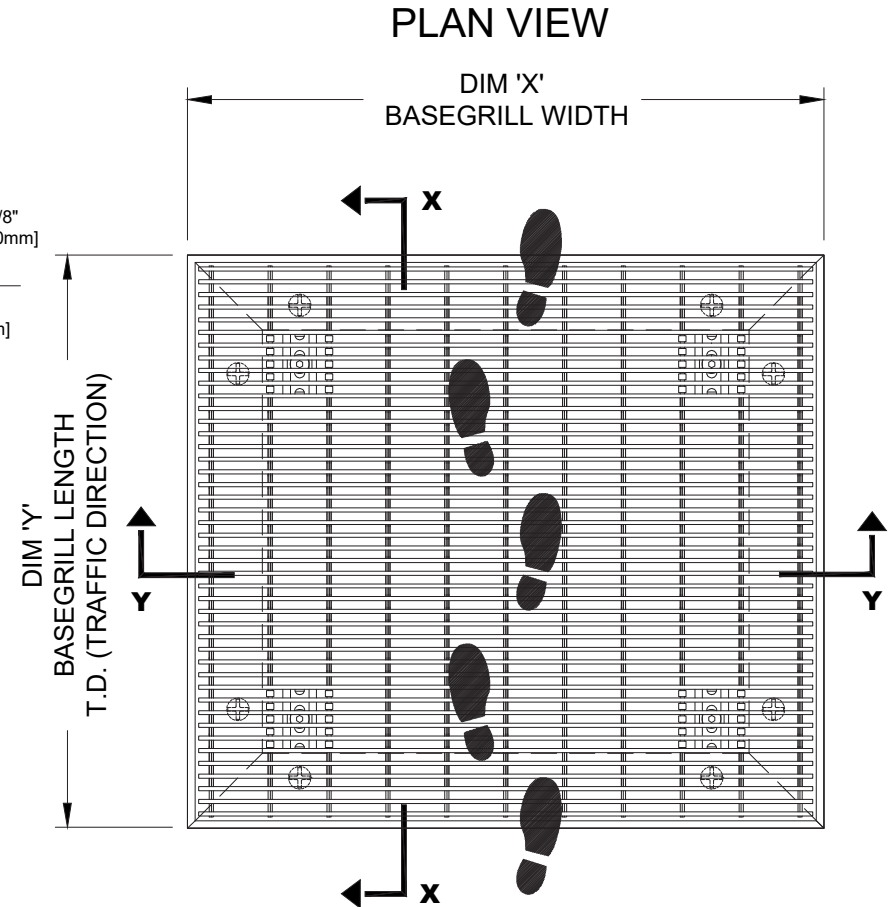
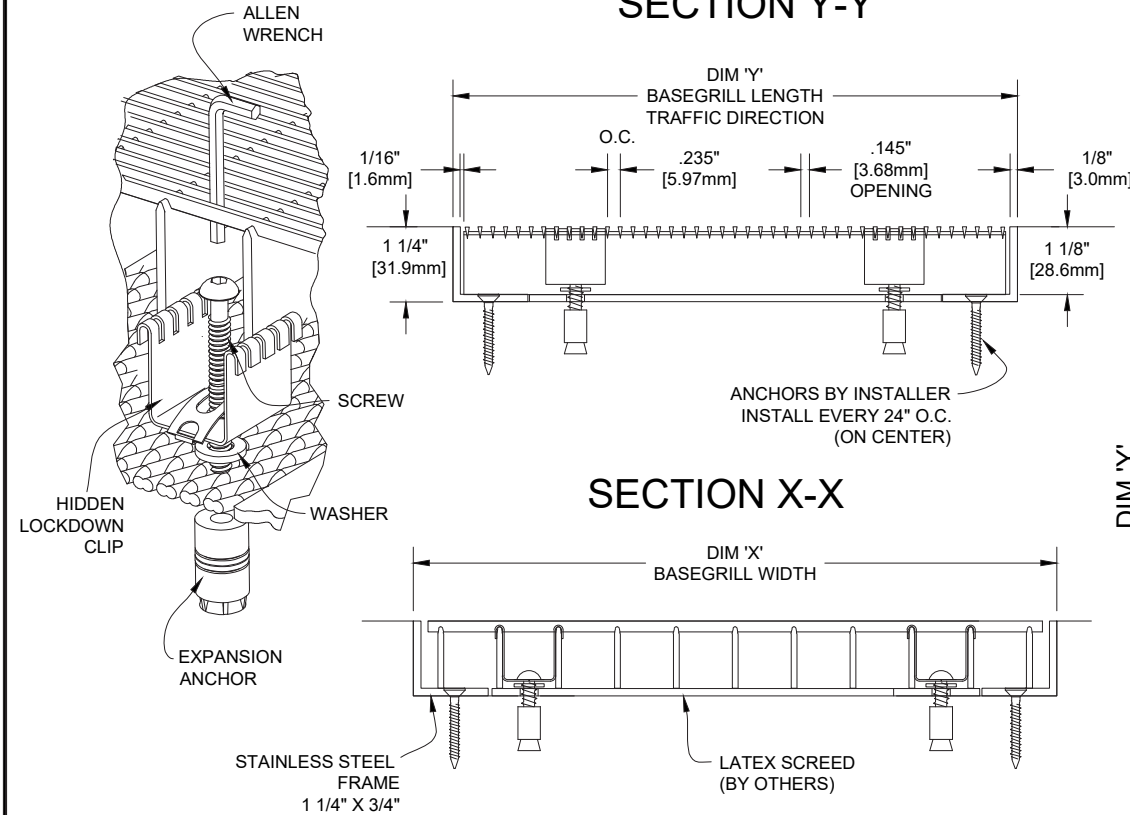
BASEGRILL 1-1/8" STAINLESS STEEL GRID WITH FRAME AND HIDDEN LOCKDOWNS

DESCRIPTION: BASEGRILL 1-1/8" STAINLESS STEEL GRID WITH FRAME AND HIDDEN LOCKDOWNS



*INSERT TYPE:

*INSERT COLOR:



NOTES:

* SCALE: NTS

- * VERIFY TRAFFIC DIRECTION - TRAFFIC TO RUN PERPENDICULAR TO RAILS
- * IF MULTIPLE SECTIONS, VERIFY SECTIONING DOES NOT OCCUR IN TRAFFIC PATH
- * MAX SINGLE MAT SIZE NOT TO EXCEED 8'-0" (2.44M) IN WIDTH (DIM "X") OR 36 SQ. FT.
- * MAT DIMENSIONS ALLOW FOR CLEARANCE BETWEEN MAT SECTION(S) AND FRAME(S) IN WIDTH (DIM "X")
- * ANCHORS BY INSTALLER CHOICE INSTALLED INTO FRAME(S) EVERY 24" ON CENTER. 6" FROM FRAME CORNERS
- * BASEGRILL SUPPORTS 500 LBS ROLLING LOAD
- * 3/8" & 5/8" BASEGRILL MUST BE INSTALLED DIRECTLY ON CONCRETE- WILL NOT SPAN RECOMMENDED USE OF ALL LOCKDOWNS PROVIDED
- * SURFACE WIRES AND SUPPORT BARS OF ADJACENT PANELS MAY NOT BE ALIGNED DUE TO ELECTRONIC RESISTANCE WELDING PROCESS
- * ADDITIONAL PRODUCT INFORMATION MAY BE FOUND AT WWW.BASE-SPEC.COM

BASEGRILL98-HL.dwg

| QTY | LOCATION | DIM "X" (WIDTH) | DIM "Y" (LENGTH) | FINISH | NOTES | PROJECT: |
|-----|----------|-----------------|------------------|--------|-------|-------------|
| | | | | | | CONTRACTOR: |
| | | | | | | DRAWN BY: |
| | | | | | | DATE: |
| | | | | | | SHEET: |